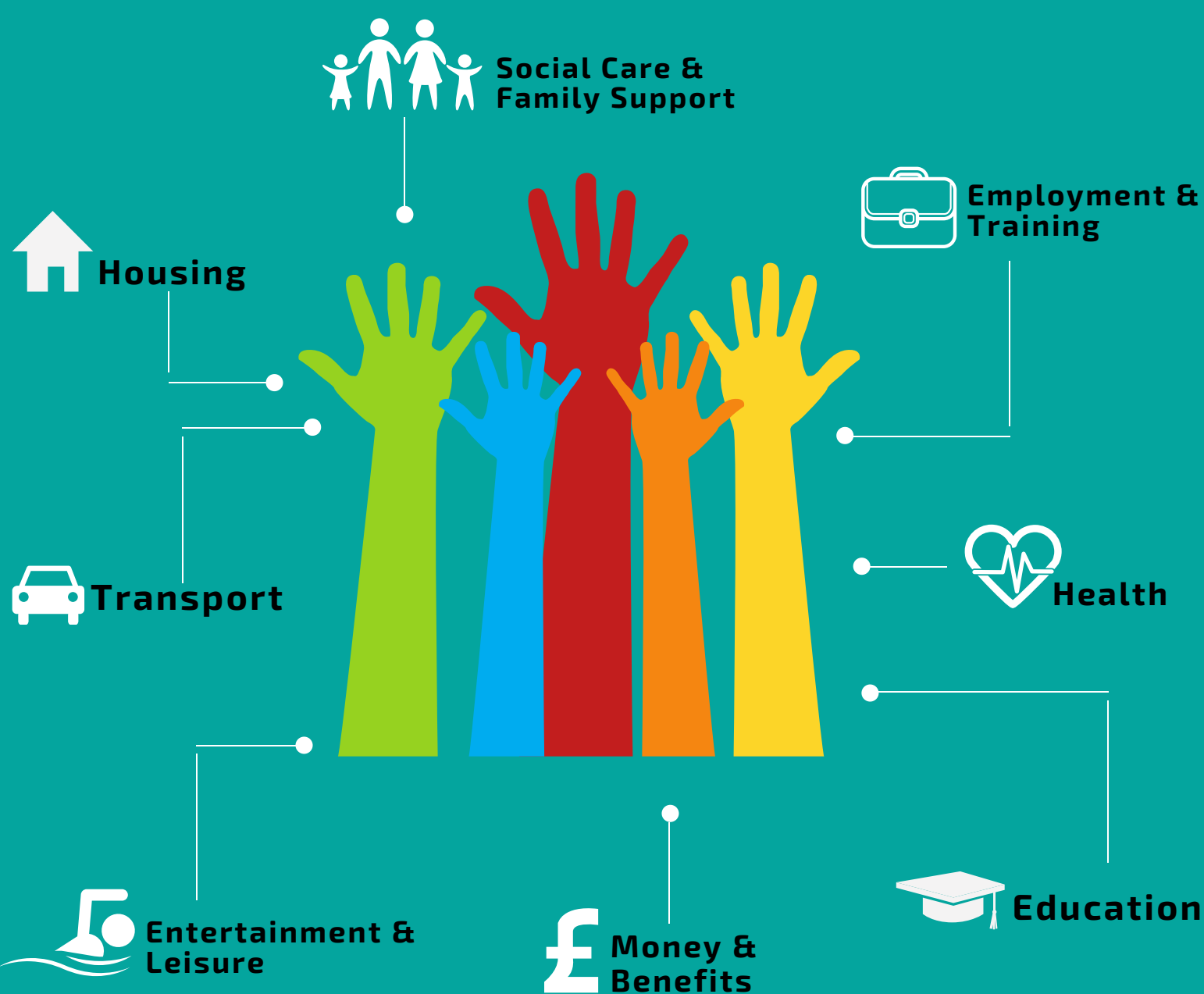


The Local Offer

What is the local offer?

The Local Offer is a Local Authority's publication of all the provision expected to be available across education, health and social care for children and young people in their area who have SEN (Special Educational Needs) or are disabled, including those who do not have Education, Health and Care (EHC) plans.

What information does the Local Offer provide?



Who is the Local Offer for?

Children and young people with SEN and/or disabilities aged from birth to 25

Parents & carers



Practitioners & professionals

