



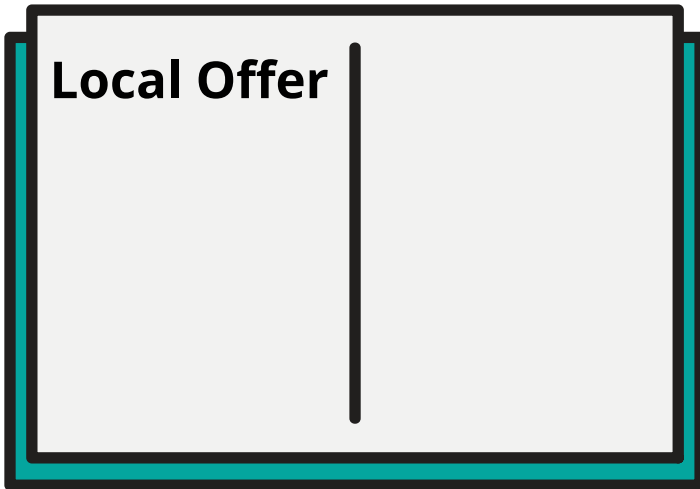
# The local offer

## Easy read guide



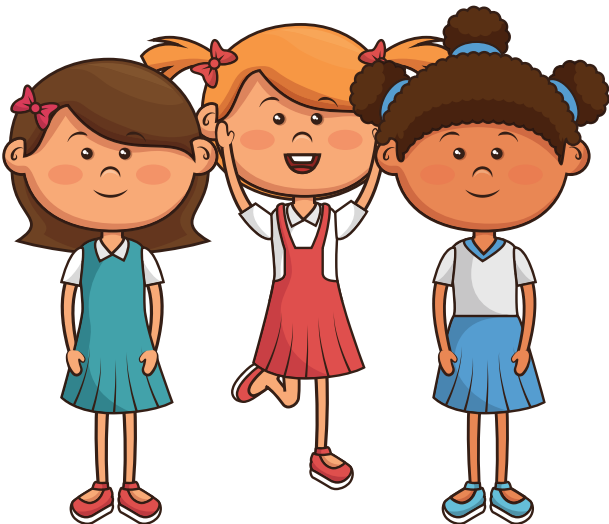
Giving  
disabled children  
a brighter future

## What is the local offer?



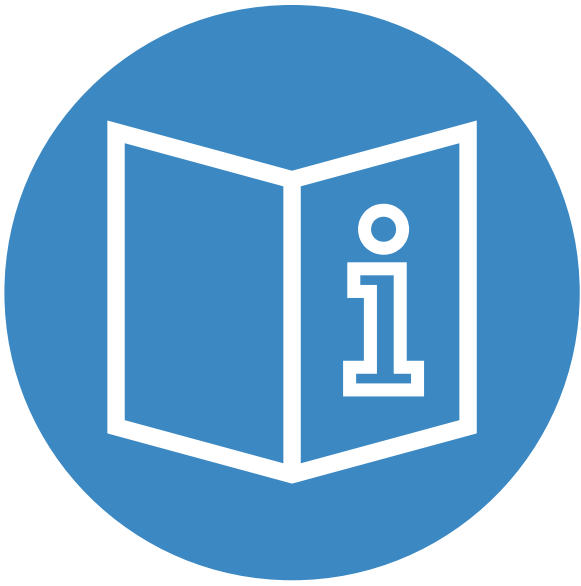
You can find information on the support given near you, by looking at the local offer.

## Who is the local offer for?



- Children and young people with disabilities under 25
- Children and young people with special educational needs
- Their parents and carers

## The local offer must tell you information about



- Schools and colleges
- Employment and training
- Leisure activities and support groups
- Arrangements on travel
- Support for becoming an adult
- Education health and care plans

See our other easy read to education health and care plans here  
<https://www.kids.org.uk/education-health-and-care-plans>