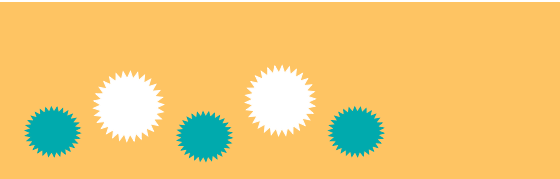


Simply Childcare

What's out there?



wakefieldcouncil
working for you



Contents

1. Introduction	2
2. What's available for me and my child?	3
3. Preparing for childcare	5
4. Troubleshooting and challenges	8
5. Useful websites and contacts	9

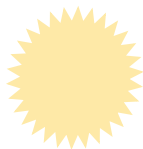
Introduction

This booklet was developed by KIDS as part of the Wakefield Disabled Children Access to Childcare (DCATCH) project in collaboration with Wakefield Council Educational Psychology Service, Wakefield Family Information Service, and Wakefield Council Childcare and Marketing Development Team.

The DCATCH project is a government initiative which came about through the Childcare Act 2006. This act highlights the need for childcare which meets the requirements of parents, as well as those of the child. Childcare is seen as a vital service within the Aiming High for Disabled Children programme. This programme provides additional funding to develop ways to improve access to childcare for disabled children and their families. The Wakefield DCATCH project was provided by KIDS and funded by Wakefield Council.

The DCATCH project aimed to build parental confidence in using mainstream childcare settings. The project also provided training and support to childcare settings to develop good inclusive practice and to demonstrate to families that childcare settings are welcoming and inclusive and that they meet their children's needs.

KIDS developed a kite mark using the All of Us Framework for Quality Inclusion. Childcare settings completed a self-assessment to demonstrate good inclusive practices. They could then receive either a bronze, silver or gold kite mark.



For more information on the All of Us Framework for Quality Inclusion kite mark, please contact the KIDS Inclusion Service on 01924 299488 or enquiries.wakefield@kids.org.uk or visit www.kids.org.uk.

For more information on settings in Wakefield which have been awarded the kite mark, contact the Wakefield Families Information Service on: 0800 5878042 or www.wakefieldfis.org.uk.

What's available for me and my child?

What are the different types of childcare available to me?

All registered childcare providers work to the same government standards. These standards are regulated and inspected by the Office for Standards in Education, Children's Services and Skills (OFSTED).



© KIDS

Childminders

This type of childcare is provided within a childminder's home, enabling flexibility in the activities children can experience.

- The group of children cared for by a childminder is usually smaller than in other childcare settings. This may be more reassuring for some parents.
- Some families might prefer the hours childminders are available to work.
- Families can often find a childminder who is local to their home or workplace.
- Another advantage of accessing a childminder is that siblings can attend the same childcare provision.





Nurseries

There are various types of nurseries available - some private, some independent and others voluntary - but they all offer similar childcare options.

- Nurseries are a safe environment in which children can play, learn and interact with other children.
- Nurseries can provide an opportunity for a child to socialise with lots of other children.
- Nurseries operate a key person system, where you will have a named person who will establish a close personal link with your child, plan your child's activities, record their progress and then regularly share this information with you.
- Nursery places can be full-time or part-time.


Wraparound care

Childcare provided before or after a school nursery session is called wraparound care.

- Wraparound care, if accessed through the same provider, offers continuity of care for your child.
- Wraparound care also offers flexibility to families.

Before- or after-school clubs and holiday clubs

These clubs are usually for children aged five and over:

- 
- They provide children with the opportunity to engage in various activities, including arts and crafts, sports and general play, in a safe and stimulating environment.
 - This type of childcare is provided around the normal school day hours and during the school holidays.

For further information on these types of childcare and the childcare provision in your local area, please contact the Families Information Service.

Preparing for childcare



Things to consider when accessing childcare

When thinking about accessing childcare for the first time, you may not be sure what type of childcare will suit your child and you as parents. It is OK to change your mind! Think about the following points:

- Contact the Families Information Service to learn about the options available in your area. They can support you to find appropriate childcare for your child.
- Consider when you want childcare for.
- Look at the age range of each childcare provider.
- Make sure you visit different types of childcare providers if more than one meets your needs.
- Once you have decided on the type of childcare, make sure you visit more than one, so you can get a feel for the different providers and settings. You may want to look at www.ofsted.gov.uk.
- Speak to other parents and ask them about the childcare provider they use.
- Ask to attend taster sessions with various childcare providers to see which best matches your needs.
- Try a few shorter sessions and build up to the amount of time you would like for your child.
- If a provider does not meet your needs, don't be put off. Keep looking and trying new providers and different types of childcare.
- Ask about settings which have been awarded the All of Us Framework for Quality Inclusion kite mark.

As with all childcare provision, it is important to visit the providers to ensure that they are aware of your child's specific requirements. Remember that you are the expert on your child. In order to get the best from your childcare, give the childcare provider clear and detailed information about your child's likes and dislikes, needs, medication and appointments. If you are using the Family File from the Early Support programme then this will help you to share information about your child and family situation along with other people who are involved in the care of your child. For more information on this, please contact the KIDS Wakefield Early Support, Advice, Information and Liaison Service (WeSail) on 01924 379015 or wesail@kids.org.uk.

Sharing information with your childcare provider regularly also ensures that your child's requirements are met and that they will enjoy the childcare they receive. For example, you may want to tell your childcare provider about the professionals who are working with your child and whether they may need to receive specific training to meet your child's needs. This means that your childcare provider can ensure that your child is included safely.

All childcare is subject to cost; the amount will depend on the setting and your Early Years Free Entitlement where applicable; please contact the provider directly for childcare costs. For more information on paying for childcare, please see 'Childcare Your Rights and Entitlements' which is available from KIDS. For further information regarding childcare, please contact the Families Information Service on 0800 587 8042 or www.wakefieldfis.org.uk.

Questions to ask childcare providers when visiting

- What sort of training do you have?
- Will you need specific training to meet my child's requirements? Are you able to organise this?
- What activities are there for children to do during the day?
- What are your arrangements for personal care?
- How many children do you look after?

- What is a typical day at your childcare provision?
- How do you communicate with families?
- Are meals provided?
- Do the children go on outings? If so, what type of transport do you use?
- Do you have pets?
- What are your opening hours and holidays?
- How much are the various sessions?
- Has the childcare provider been awarded the All of Us Framework for Quality Inclusion kite mark?

Other things to think about when visiting childcare providers

- Do you feel welcome?
- Is the setting child-friendly and accessible for your child?
- Do the other children look like they are stimulated and having fun?
- Do the staff team seem comfortable around your child's impairment?
- Do you want childcare local to the school that your child may go to in the future?
- Do you and your child feel welcome?
- Is the setting child-friendly and accessible for your child?
- Do the children currently using the setting seem happy and are they having fun?

If you need support, advice or information on accessing childcare or more specific support for your child to be included in childcare, the Wakefield KIDS Inclusion Service can help both your family and the setting to experience a positive introduction and experience to accessing childcare. For more information, contact 01924 299488, enquiries.wakefield@kids.org.uk or visit www.kids.org.uk.

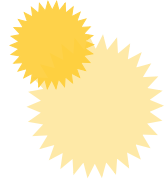
Troubleshooting and challenges

Are you having problems with your current childcare provider?

If you are having any problems, talk to your child's named person or key person. If you are still not happy, you may want to ask to have a meeting with the manager or owner of the provision. The owner or manager of the provision should discuss possible solutions and draw up a plan as to how the problem can be resolved and, if relevant, how other professionals may support the family and provider. Arrange a follow-up meeting to discuss how you feel things have been dealt with and whether the problem has been resolved.

- Ask to have a meeting with the manager or owner of the provision.
- Be clear when describing the problems you are having with the provider.
- Discuss possible solutions.
- Draw up a plan with the provider to detail how the problem can be resolved and, if relevant, how other professionals may support the family and provider.
- Arrange a follow-up meeting to discuss how you feel things have been dealt with and whether the problem has been resolved.
- If you still don't feel your problem has been resolved and if you want further information, advice or someone to advocate on your behalf if you have a complaint, contact Wakefield Families Information Service on 0800 5878042 or www.wakefieldfis.org.uk, or KIDS Inclusion on 01924 299488 or enquiries.wakefield@kids.org.uk. Remember, if you actually have a complaint, it's better to put this in writing.
- Don't be put off accessing childcare; this provision may not have been right for you, but others will be.

Useful contacts and websites



Local Contacts

KIDS Inclusion Service

Wakefield council funds KIDS to provide the Inclusion Service to promote the inclusion of disabled children into mainstream childcare. KIDS can support families of children with additional needs to receive information on accessing mainstream childcare. Parents may be in or considering employment, training or volunteering or may have a need for childcare. Information can be provided about money, childcare settings or inclusion. KIDS will also advise and/or advocate for parents in case of concerns or problems. Support, information, advice and training is also available to the setting, in order to promote the introduction of children with additional needs to childcare. KIDS also provides support to settings to attain the 'The All of Us Framework' Quality Inclusion Kite Mark.

KIDS also offers specialist support to children aged 3 to 14 with complex needs who have a Statement of Special Educational needs, indicating full-time support within a school or nursery or with either 15 hours in nursery and at least 25 hours in school. However, if a child's setting has less than full-time equivalent support but has additional lunchtime support, children may also be eligible pending individual assessment. Specialist support may include providing additional adult support to the childcare setting. For further details on the service or the criteria, please contact KIDS on 01924 299488 or email enquiries.wakefield@kids.org.uk.

Wakefield Early Support, Advice, Information and Liaison Service (WeSail)

Wakefield's Early Support, Advice, Information and Liaison Service (WeSail) Wakefield Council and NHS Wakefield District also fund KIDS to provide WeSail, to deliver a service to families caring for a child with additional needs and living within the Wakefield district. The intention is to provide a first stop for families in terms of information, advice, support and signposting. For more information on WeSail, contact us on 01924 379015 or wesail@kids.org.uk.

Families Information Service (FIS)

The Wakefield District Families Information Service aims to provide comprehensive, accurate, up-to-date information on a wide range of subjects such as parenting and relationships, childcare, physical and mental health, sports, play and recreational opportunities, support services for young people and much more.

Contact the FIS on 0800 5878042 or fis@wakefield.gov.uk, www.wakefieldfis.org.uk

The Portage Service

Portage is a home teaching service for pre-school children who show some degree of developmental delay. The service supports parents to teach their child new skills, using a small steps approach. Weekly visits are undertaken by a trained home visitor, who works in close partnership with the family and with other services who are involved.

The Pre-5: SEN and Portage Service

The Pre-5: SEN and Portage Service is a team of advisory teachers and educational support assistants who are experienced in working with young children with developmental delay. The staff work in schools and other educational settings, offering training and advice and support around the needs of individual children. They work in close partnership with parents and other services. The Pre-5: SEN and Portage services are located within the Wakefield Educational Psychology Service.

For more information on these services contact:

The Educational Psychology Service
1st Floor, Block C,
Normanton, Town Hall, High Street,
Normanton, WF6 2DZ
Contact on: 01924 307403 or
eps@wakefield.gov.uk



Useful Websites

For information about childminders visit the **National Childminding Association**: www.ncma.org.uk

Every Disabled Child Matters is a campaigning organisation which focuses on topics affecting disabled children and young people: www.ncb.org.uk/edcm/home.asp

Mumsnet is a useful website for up-to-date information provided by parents for parents: www.mumsnet.com

Daycare trust is a national childcare charity which campaigns on behalf of parents, carers and their children: www.daycaretrust.org.uk

Direct.gov is a government website to keep you updated on current issues and changes including information on your rights and entitlements, including paying for childcare. The website also provides a link to Jobcentre Plus: www.direct.gov.uk/en/index.htm and www.direct.gov.uk.

OFSTED The Office for Standards in Education, Children's Services and Skills regulates and inspects childcare providers. You can access all inspection reports from individual child minders and childcare settings at www.ofsted.gov.uk

KIDS - Working with disabled children, young people and their families. More information can be found on the All of Us Framework for Quality Inclusion, by downloading the briefing document with the same name at www.kids.org.uk/publications

Contact a Family is a UK charity for families with disabled children. They offer a free family helpline for parents for families with disabled children. The charity also campaigns on behalf of disabled children's families in the UK. For more information 0808 808 3556 www.cafamily.org.uk



KIDS Inclusion Service
01924 299 488
enquiries.wakefield@kids.org.uk

Wakefield Families Information Service
0800 587 8042
www.wakefieldfis.org.uk

